

Studying at Jade University of Applied Sciences

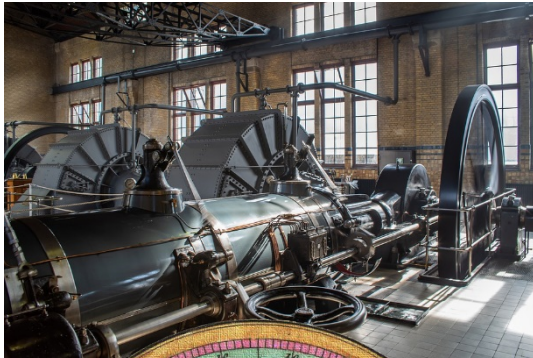
Ilze Peksa, International Office
Regine Zink-Zimmerer, Engineering Department
Anna-Maria Thiele, MIT Department

October 2021



Germany's newest University of Applied Sciences is located in the north-west, at the very top of the country.

| | |
|-------|--------------------------|
| 2009 | year of foundation |
| 3 | campuses |
| 6 | faculties/ departments |
| 7.000 | total number of students |
| 37 | Bachelor courses |
| 15 | Master courses |
| 650 | number of employees |
| 200 | number of professors |
| 90 | Partners in 30 countries |



All three campuses have a long tradition in their separate subject fields.

- Nautical studies in Elsfleth goes back to 1832
- Engineers have been trained in Oldenburg since 1877
- In Wilhelmshaven the Academy for Managers was founded in 1947 and engineers have been trained for more than 50 years

THE DEPARTMENTS



Wilhelmshaven

Engineering

Engineering and
Management

Economics

4.200
students



Oldenburg

Architecture

Civil Engineering,
Geoinformation and
Health Technology

2.200
students



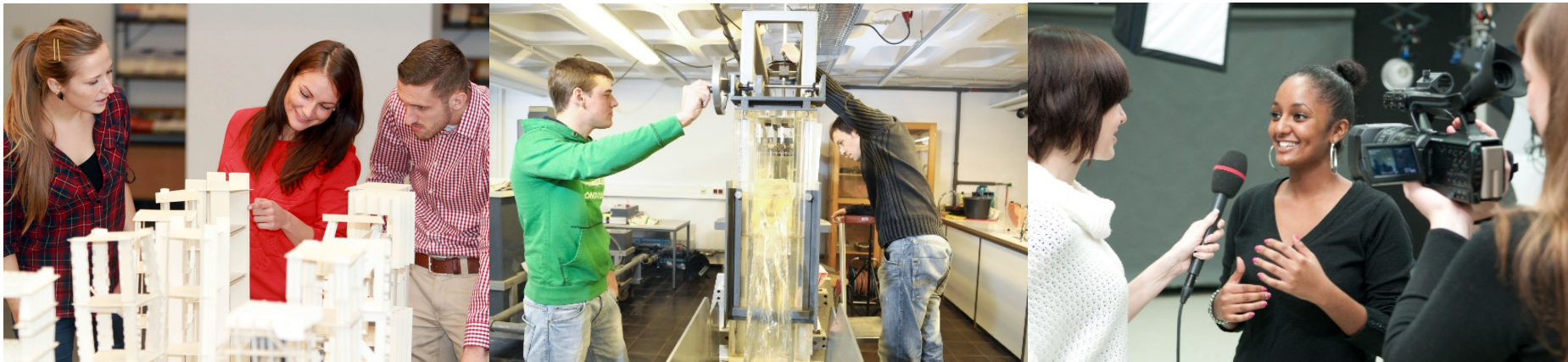
Elsfleth

Maritime and Logistics
Studies

600
students

- Architecture
- Civil Engineering
- Geoinformatics
- Medical Technology / Health Technology
- Computer Science in Engineering and Management
- Maritime and Logistic Studies
- Media Management
- Mechanical Engineering
- Tourism Management
- Engineering and Management

Besides: Dual Studies, Online-Studies, Master School, International Studies



WHAT WE STAND FOR



- Jade University of Applied Sciences encourages **independent**, critical thinking and **unconventional solutions**.
- As a University of Applied Sciences we combine **academic training** with **key qualifications** and **practical trainings**.
- We foster **cooperation with companies** and all of our teaching staff must have several years of **working experience** in companies.
- We educate young people with a **passion for the future**.
- Our professors are taking a personal interest in students and **facilitate contacts** with potential employers.

WHY STUDY AT JADE UAS?

- Great variety of practically oriented study programs and well equipped laboratories
- We speak “Hochdeutsch” (standard German)
- “You can study where others spend their holidays.”
- Students are not left alone!
We offer intensive personal counselling
 - academic tutoring by professors and assistants
 - language tutoring by German language teachers
 - organizational support and counselling by the International Office



WHY STUDY AT JADE UAS?

- International atmosphere:
students come from all
over the world
- no worries about security:
Wilhelmshaven,
Oldenburg and Elsfleth
are **safe places!**
- family-like atmosphere:
students quickly find
friends
many support services
are available
- professors are
approachable at all times



SPECIAL OFFERS FOR INTERNATIONAL STUDENTS

- Assistance in finding accommodation
- German courses (e.g. TestDaF preparation courses)
- Intercultural communication courses
- Host stay with German families
- Counselling
- Excursions
- International evenings
- Jade Kolleg (one year prep-course for studying at Jade UAS)



- German Intensive Course
- Biomedical Engineering Course
- Engineering Summer Schools
- Intercultural Communication
- The European Union:
Ideas, challenges and
perspectives



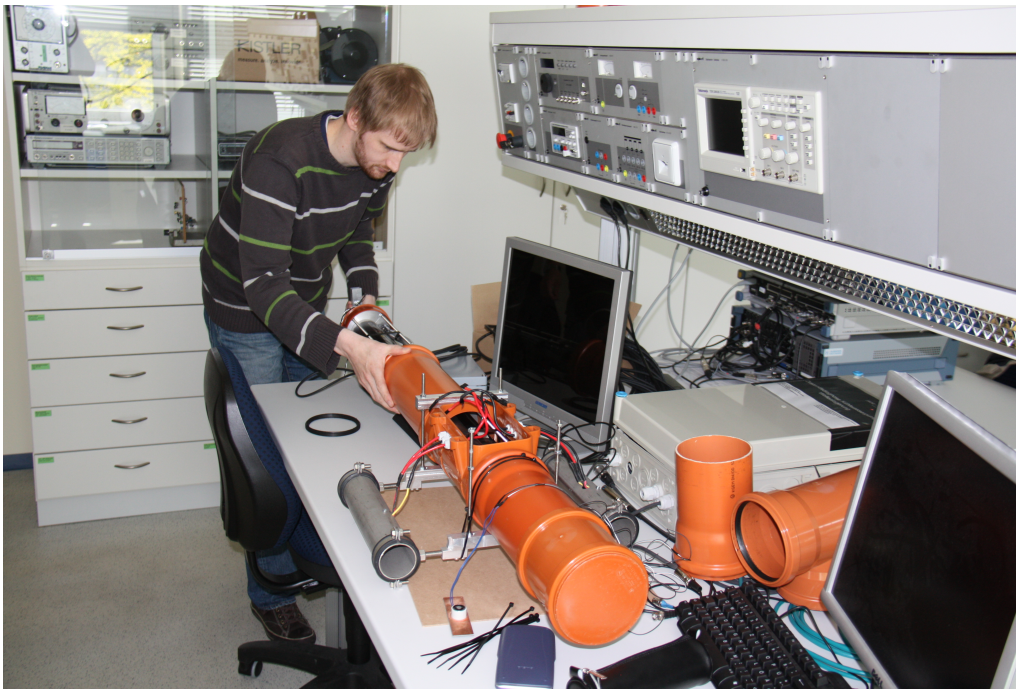
WHY STUDY AT JADE UAS?

We offer a variety of practically oriented courses: e.g. Biomedical engineering
Jade UAS offers **undergraduate** and **graduate** programs.



WHY STUDY AT JADE UAS?

We offer well equipped laboratories and strong relations to companies!



- Courses in english language –
Bachelor, 5 ECTS

| module | type |
|--|--------------------|
| Artificial intelligence (with lab) | technical elective |
| Computer-aided design of microwave circuits and systems (with lab) | technical elective |
| German as a foreign language A1 | key qualification |
| German as a foreign language A2 | key qualification |
| Intercultural communication and management | key qualification |
| TCP/IP network programming | technical elective |
| Projectmanagement | key qualification |

- Courses in english language –
Master, 5 ECTS

| module | type |
|---|-----------------------------------|
| Compact Modelling of Large-scale Dynamical Systems (with lab) | technical elective |
| Laser materials processing (with lab) | technical elective (on demand) |

- Course in english language – **Bachelor**, 5 ECTS
- Biomedical Engineering Summer School with Modul: Basics of Biomedical Engineering
- Courses in english language – **Master**, 5 ECTS
- Biomedical Engineering Summer School with Modul: Biomedical Signal and Image Acquisition, Processing and Analysis
- International Summer School on Fluidic MEMS with Modul: International Summer School on Fluidic MEMS

- Courses in english language –
Bachelor, 5 ECTS

| module | type |
|--|--------------------|
| <u>Artificial intelligence (with lab)</u> | technical elective |
| <u>German as a foreign language A1</u> | key qualification |
| <u>German as a foreign language A2</u> | key qualification |
| <u>Wireless Internet of Things (IoT) Applications (with lab)</u> | technical elective |
| <u>The European Union: ideas, challenges and perspectives</u> | key qualification |

- Courses in english language –
Master, 5 ECTS

| module | type |
|--|--|
| <u>Compact Modelling of Large-scale Dynamical Systems (with lab)</u> | technical elective |
| <u>Manufacturing engineering of aircraft engines (with lab)</u> | technical elective |
| <u>Realtime computing (with lab)</u> | technical elective |
| <u>Rubber technology</u> | technical elective |
| <u>Intercultural negotiations and presentations</u> | key qualification (2 weeks in February) |
| <u>Laser materials processing (with lab)</u> | technical elective (on demand) |

Why choose courses in english language at this department?

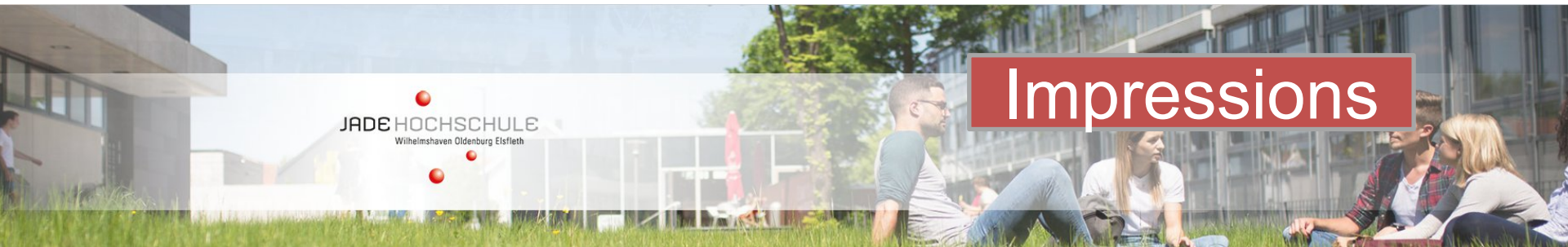
- The department of Management, Information, Technology has approximately 800 students per semester. 35 professors and 37 people in the academic and administrative staff contribute to the education of the students. The department offers three undergraduate programs and two graduate programs.
- Our undergraduate programs blend engineering science, computer science and economics with critical and creative thinking, in order to find engineering solutions ,Made in Germany‘
- Graduates are successful engineering professionals regional, national and worldwide
- Possible by teaching intimate classes, hands-on internships, and high encouragement for worldwide student mobility

**You are an undergraduate student studying an engineering science?
Students from abroad welcome!**

- 5 courses in english language every winter-semester (each 5 credit points/ European Credit Transfer System) with engineering focus:
 1. Work and Industrial Organization
 2. Project management
 3. Technology of cyber-physical systems
 4. Enterprise logistics
 5. Production and supply networks
- Courses are part of the academic catalogue of the undergraduate study program 'Engineering and Management' and have been subject to national accreditation by the States Accreditation Body "Zentrale Evaluations- und Akkreditierungsagentur Hannover (ZEvA)"
- Course descriptions for sending institution's approval available on request

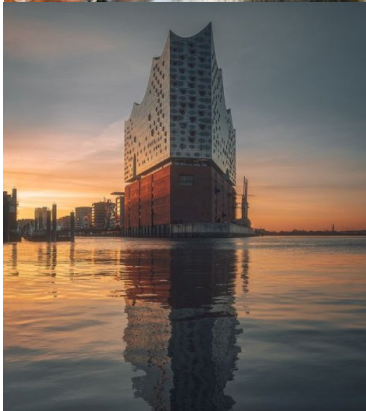
COSTS FOR STUDYING AT WILHELMSHAVEN

| | | Sum for 2 semesters/ 1 year |
|--|-----------------------------|--|
| Studying fee (Includes ticket for public transportation) | \$470,- per Semester | \$940,- |
| Accommodation | Monthly about \$230 - 350,- | About \$2.800 - 4.200,- |
| Health insurance | Monthly about \$135,- | About \$1.610,- |
| Liability insurance | | About \$70,- |
| Food | Monthly about \$230,- | About \$2.800,- |
| Hobbies | Monthly about \$60,- | About \$700,- |
| Sum | | About \$8.900 - 10.300,- |



Impressions

EXCURSIONS TO BREMEN, HAMBURG, BERLIN



Credits: jonaskawasaki, matthiasvfx, visit.bremen, 19fraenky76

UNESCO WORLD NATURAL HERITAGE “WADDEN SEA” - MUD-FLAT HIKING



WILHELMSHAVEN



CONTACT US – WE'RE LOOKING FORWARD TO WELCOMING YOU!

Jade Hochschule Wilhelmshaven/Oldenburg/Elsfleth



Andrea Menn
Head of International Office
menn@jade-hs.de



Ilze Peksa
International Office
ilze.peksa@jade-hs.de



Regine Zink-Zimmerer
Engineering Department
regine.zink-zimmerer@jade-hs.de



Anna-Maria Thiele
MIT Department
anna-maria.thiele@jade-hs.de